

LOGarc

User Guide

Tuesday, August 16, 2011



The Source for Critical Information and Insight™

© 2007-2011, IHS Inc. and its affiliated and subsidiary companies, all rights reserved. All other trademarks are the property of IHS Inc. and its affiliated and subsidiary companies. This product, including software, data and documentation are licensed to the user for its internal business purposes only and may not be disclosed, disseminated, sold, licensed, copied, reproduced, translated or transferred to any third party.

IHS Inc.

15 Inverness Way East
Englewood, Colorado 80112
303-736-3000

Contents

What is LOGarc	4
Contacting Customer Care	4
System Requirements	5
Adding or Editing User Account Settings	6
Configuring Searches	8
About Searching	8
Advanced Searches	9
Searching by Area and Well Lists	10
Searching by Fields	12
Changing Search Domains	12
Selecting Logs	13
About the Search Results Grid	13
Changing the Search Results Grid	14
Filtering Digital Logs in the Search Results Grid	17
Filtering Raster Logs in the Search Results Grid	20
Filtering Well Files in the Search Results Grid	21
Selecting and Retrieving Logs	21
Exporting UWIs to Well Lists or to the Clipboard	23
Saving and Loading Projects	24
Saving and Loading Retrieve Profiles	25
Viewing Well Data using Visual Explorer	25
Dialog Boxes	26
Accounts	26
Add User Account	26
Custom Filter Settings	26
Edit User Account	27
Grid Color Selector	27
Proxy Info	27
Retrieve Pane	28
Search pane	29
Show Hide Columns	29
Visual Curves tabs	29

What is LOGarc

Use LOGarc to search for and retrieve well log data from IHS.

First type search parameters to retrieve a list of curves, rasters, and well files to download. Then using the list, select the desired items and processing options.

LOGarc writes the files to a directory you specify.

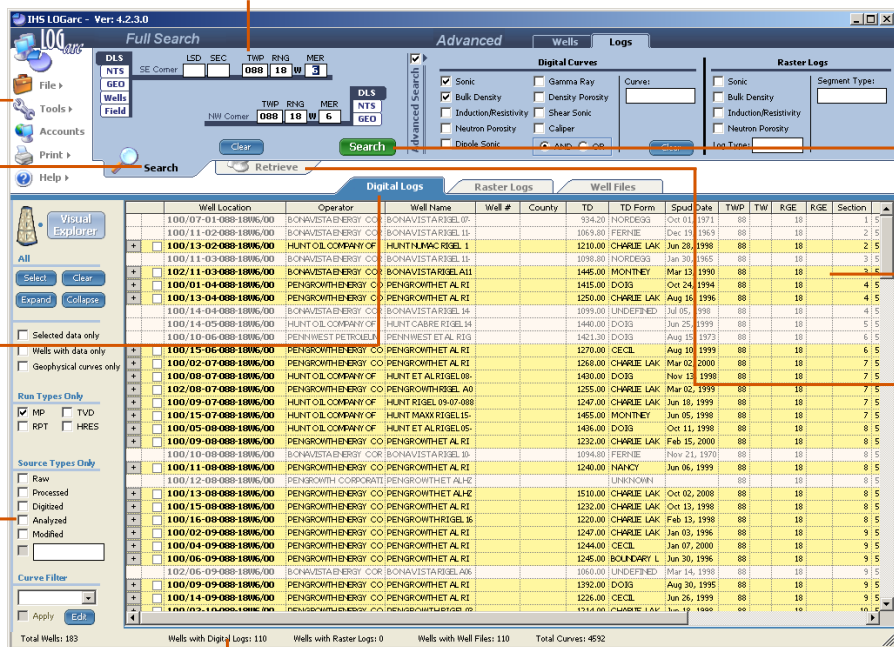
Type well coordinates for a given survey system.

Modify program settings.

Use the Search tab to populate the Search Results grid with a list of items available for download.

Click the type of search results to display.

Filter what data appears in the Search Results grid.



Click to populate the Search Results grid.

Click curves to download.

Use the Retrieve tab to download LAS files

A summary of the search results appears.

Related Topics

See "System Requirements," p. 5

See "About the Search Results Grid," p. 13

See "About Searching," p. 8

Contacting Customer Care

Phone	403 770 4500
Fax	403 770 4647
Email	support.cdn@ihs.com

Upon encountering issues while running LOGarc, switch on diagnostic mode to generate a log file and recreate the steps that led to the error. IHS Customer Care can review the log to troubleshoot the LOGarc issue.



To enable diagnostics mode

1. From the **Help** (🔍) menu, select either **Enable Diagnostics Mode**.

The *Visual Trace Log* window appears.



► To transfer a copy of the log to another application such as a text editor or email message, click **Copy Log**.

2. Recreate the offending steps and then click **Close**.

The log is sent to IHS Customer Care.

Related Topics



See *"What is LOGarc,"* p. 4

System Requirements

We recommend the following system specifications:

- Windows XP with Service Pack 2, or Windows 2000 Professional with Service Pack 4
- 1 GHz Pentium 4 processor
- 1 GB RAM
- Video card with 64 MB RAM and minimum 1024x768 resolution

Related Topics



See *"Contacting Customer Care,"* p. 4

Adding or Editing User Account Settings

Account settings enable you to poll proprietary sources as well as the IHS Information Hub. Poll a data source either directly or using a proxy server.

Each data source you create appears as an account. Move the entries in the list of accounts up or down to set the order in which to poll them. UWIs are polled for data starting from the account listed first and then working down. When data is found for a UWI, data for that same UWI is ignored if found when accounts further down the list are polled.

Details for both adding or editing user account settings and for configuring hierarchal searches appear below.

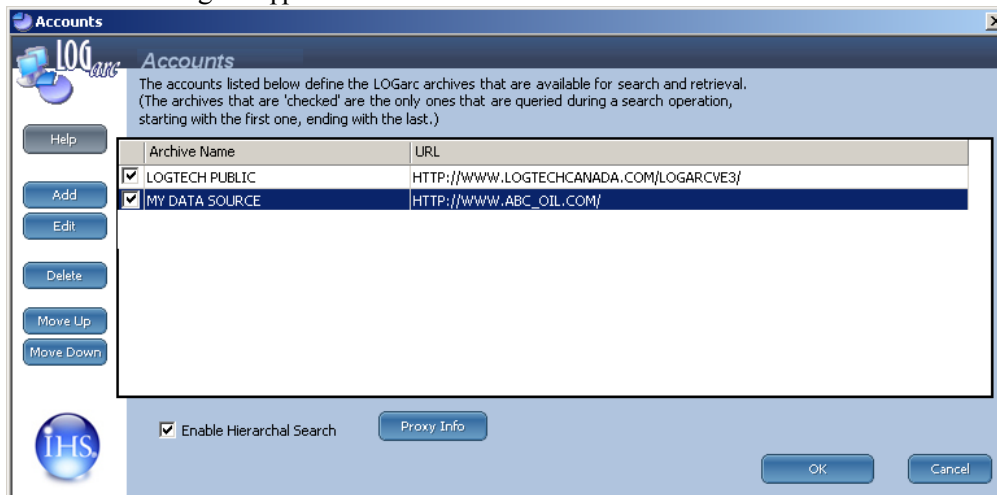
These settings are configured for you when LOGarc is first installed. Don't change them unless advised to do so by Customer Care or internal support personnel.



To add or edit user account settings

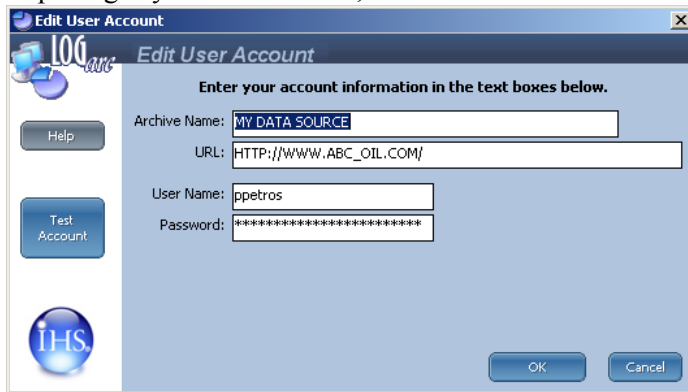
1. Click **Accounts** (🌐) in the top-left of the window.

The *Accounts* dialog box appears.



2. Click either of the following:
 - **Add** - create a new account. Do this to add a link to a proprietary database. You can set the order in which multiple databases are polled.
 - **Edit** - change details of an existing account.

Depending on your selection above, either the *Add User Account* or *Edit User Account* dialog box appears.



3. Type account details and then click **Test Account**.

A message appears in the lower portion of the dialog box indicating whether connection with the server was established.

4. Click **OK**.

► If setting up a connection to a proxy server, click **Proxy Info** to display the *Proxy Info* dialog box and type the details.



To configure hierarchal searches

1. With the *Accounts* dialog box displayed and the data source you want to poll configured using the process that appears above, below the grid pane, select **Enable Hierarchal Search**.
2. Select one of the data sources to move up or down in the display pane (the first entry in the list is polled first), and then click either **Move Up** or **Move Down**.

Related Topics



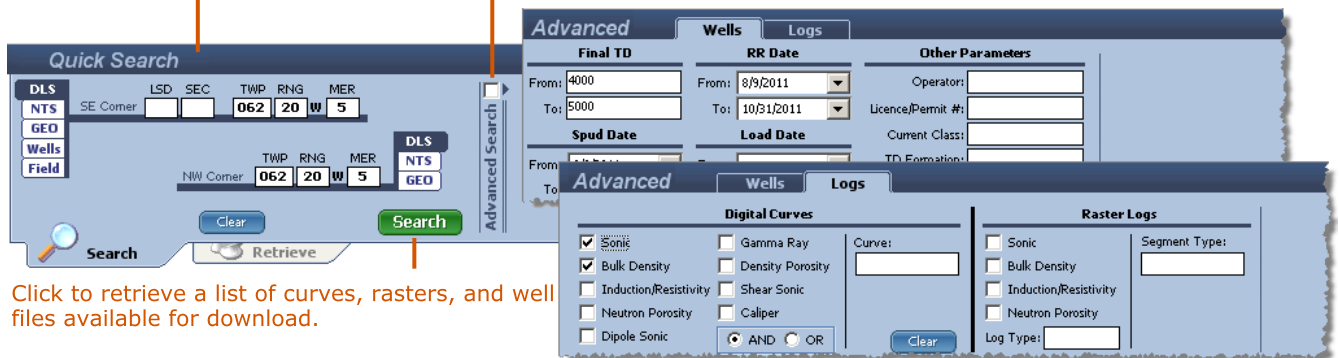
See "About Searching," p. 8

Configuring Searches

About Searching

Click to search by coordinate system, well list, or field name. You can select different coordinate systems for the SE and NW corners.

Click to enable advanced well and log filtering criteria you specify.



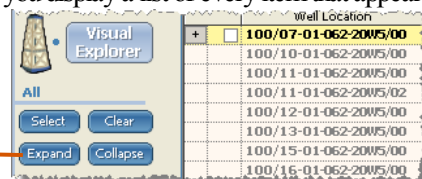
Click to retrieve a list of curves, rasters, and well files available for download.

Depending on whether you use Full or Quick search, you either download a full list of curve records and other items available for a well, or download only a list of wells where the curve records and other items are not downloaded for a particular well until you expand the well node in the search results grid. Here are the details:

- **Quick Search** - download a list of all the wells that fall within the area of interest you define. The actual list of curve records that you can download for each well are not downloaded until you expand the well node under which the items appear. This type of search is useful when you are retrieving a large volume of curves for use with a third-party application, and don't necessarily need to process and sort every individual curve. When using the Full Search method below, if the number of wells exceeds 10,000 LOGArc prompts you to switch to Quick Search mode.
- **Full Search** - download a list of curve records and other items available for each well along with the list of wells. Full Search is recommended for up to 10,000 wells. Because a list of all curves and other items is retrieved using Full Search, an Expand button appears to the left of the Search Results grid with which you display a list of every item that appears

under every well in the Search Results grid.

When attempting a full search that will generate more than 10,000 wells, LOGArc prompts you to switch to Quick Search.



Expand all well nodes.

For both Quick and Full searches, you can filter the wells retrieved by adding advanced filter criteria.

Advanced Search enables you to add well and log filters. Items must match all of the criteria you specify in order to be retrieved. In Boolean terms, an AND operand joins the criteria you select, not an OR operand.

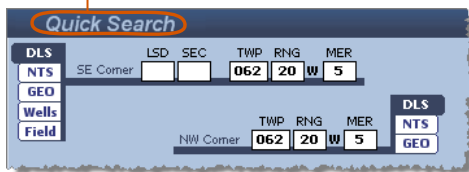
You can save project settings, including search criteria and search result display criteria, that you subsequently load by selecting **File** (📁) > **Open Project**. For details, see *Related Topics* below.

To specify Quick or Full Searches

► From the **Tools** (🔧) menu, select either **Full Search** or **Quick Search**.

The type of search you selected (Quick or Full) appears above the search options in the top-left of the window as depicted below.

Search mode listed.



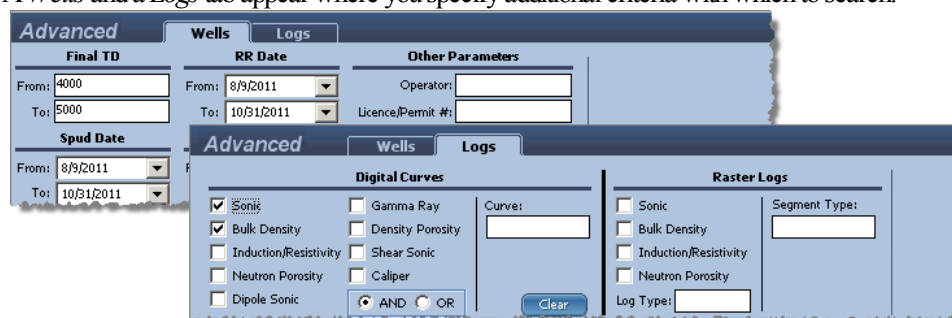
You can now type your search criteria.

Advanced Searches

Advanced searches enable you to specify well and log parameters with which to search. Advanced search is available for both Quick and Full searches and in all domains (coordinates, GEO, Wells, and Fields). For wells, advanced searches restrict the wells returned by the search, they don't restrict the actual data returned for wells.

To specify Advanced search

1. In the top search pane, click the **Advanced Search** checkbox to the right of the domain controls.
2. A *Wells* and a *Logs* tab appear where you specify additional criteria with which to search.



The Logs tab includes the *AND OR* boolean operators for either limiting or expanding the criteria of our search.

Related Topics



See "Searching by Area and Well Lists," p. 10
See "Saving and Loading Projects," p. 24

See "Searching by Fields," p. 12
See "Saving and Loading Retrieve Profiles," p. 25

Searching by Area and Well Lists

Search using either coordinates you type, or a well list with a *.txt*, or *.wel*, extension.

For Canadian wells, the format for well lists must be UWIs only with no other information, one UWI per row, and full 16-character CPA format with or without delimiters.

Type UWIs or APIs directly into the list box, paste up to 2,000 in the list box, or import a well list of any size using the import function.

Depending on the survey system, the following coordinates are mandatory:

- **DLS** - Township, range, and meridian.
- **NTS** - Sheet, segment, and block.
- **Geodetic** - Decimal degrees latitude, decimal degrees longitude.

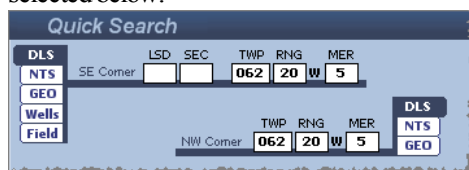
The file format of the well list must be simple ASCII or ANSI format. Here's an example of a well list of Canadian UWIs saved in ANSI format using Notepad.

```
Gondwana Sands.txt - Notepad
File Edit Format View Help
1.00063609907w600
1.00061810006w600
1.00151310007w600
1.00102010007w600
1.00112310007w600
1.00162410007w600
1.00100210008w600
```



To search by coordinates

1. In the search area in the top-left of the window, select the coordinate system. For example, the DLS coordinate system is selected below.



2. Type the geographic coordinates.
SE and NW coordinates can be specified using different coordinate systems for cross-border regions.

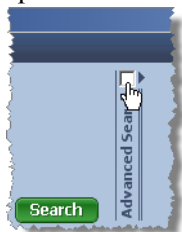
- ▶ For viewing preference, you can swap the display location of the NW and SE corners. From the **Tools** (🔧) menu, select **Swap NW and SE Entries**.
- ▶ To add additional well criteria including well parameters (TD, Spud Date, and more) click the **Advanced Search** checkbox and select the **Wells** tab.

- ▶ To add additional log criteria (curve types and raster logs) click the **Advanced Search** checkbox and select the **Logs** tab. If you add criteria to both the Wells tab and the Logs tab, LOGArc applies both during your search.
- ▶ For well list searches, to view a list of UWIs that could not be found, from the **Tools** (🔧) menu, select **Show Well List Search Summary**.

3. Click **Search**.

- ▶ If you enabled the *Well List Summary* dialog box, it appears showing the data types (digital, raster, well files, and UWIs) for which UWIs you specified could not be found. Click to save results of a pane to your Windows clipboard so that you can paste it into a text editor or into an email to IHS Customer Care.

- ▶ To disable the advanced search criteria, clear the **Advanced Search** checkbox. You do not need to clear all of the options selected above in the Wells and Logs tabs.



Related Topics



See "Searching by Fields," p. 12

See "Saving and Loading Projects," p. 24

See "About the Search Results Grid," p. 13

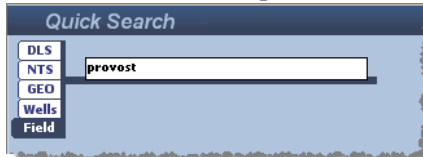
Searching by Fields

Retrieve logs and well files if you know the name of the field. Currently there is no lookup table from which you can select a field name from a list.



To search by field name

1. In the search area in the top-left of the window, click **Fields**.



2. Type the field name in the box. Use * or % as a multi-character wildcard.
 - ▶ To add additional well criteria including well parameters (TD, Spud Date, and more) click the **Advanced Search** checkbox and select the **Wells** tab.
 - ▶ To add additional log criteria click the **Advanced Search** checkbox and enter criteria using the **Wells** and **Logs** tabs. If you add criteria to both the Wells tab and the Logs tab, LOGarc applies both.

3. Click **Search**.

- ▶ To disable the advanced search criteria, clear the **Advanced Search** checkbox. You do not need to clear all of the options selected above in the Wells and Logs tabs.



Related Topics



See *Searching by Fields*, p. 1
See *"Saving and Loading Projects,"* p. 24

See *"About the Search Results Grid,"* p. 13

Changing Search Domains

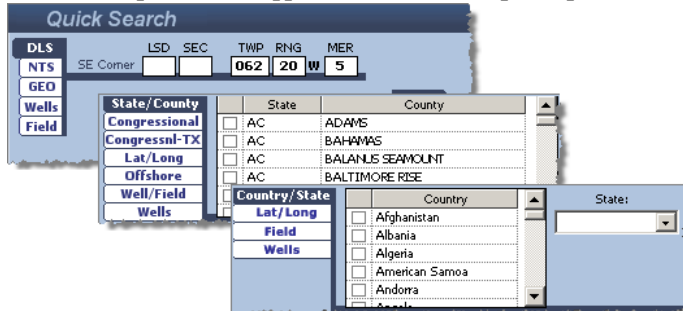
Select Canadian, US, and International domains.



To change search domains

► From the **Tools** (🔑) menu, select one of the search domains.

The search options in the upper-left of the Search pane update to reflect your selection.



Related Topics



See "About Searching," p. 8

Selecting Logs

About the Search Results Grid

Think of the Search Results grid as a catalog of curves, rasters, and well files available from your companies proprietary server or the IHS Data Hub.

Retrieve all of the items for a well.

Click to select different catalogs.

Expand a well to display its items.

Retrieve individual items.

View the search results summary.

Well Location	Operator	Well Name	Well #	County	TD	TD Form	S
102/09-01-040-03W4/00	Penn West Petroleum Ltd.	STARPOINT PROVO 91			907.00		M
Curve							
	Curve	Units	Description	Start	End	Increment	Inv
<input type="checkbox"/>	CALI	MM	7	119	898	0.125	M
<input type="checkbox"/>	CALI	MM	6	802.125	924.875	0.125	M
<input type="checkbox"/>	DPHI	%	13	119	898	0.125	M
<input type="checkbox"/>	DPHI	%	10	802.125	924.875	0.125	M
<input type="checkbox"/>	DRHO	K/M3	10	119	898	0.125	M
<input type="checkbox"/>	DRHO	K/M3	8	802.125	924.875	0.125	M
<input checked="" type="checkbox"/>	GR	GAPI	8	111	890	0.125	M
<input checked="" type="checkbox"/>	GR	GAPI	7	802.125	924.875	0.125	M
<input type="checkbox"/>	ILD	OHMM	4	119	905	0.125	M
<input type="checkbox"/>	ILD	OHMM	4	802.125	924.875	0.125	M
+ 100/11-01-040-03W4/00	Penn West Petroleum Ltd.	STARPOINT PROVO 11-			1065.00		M
+ 103/16-01-040-03W4/00	Penn West Petroleum Ltd.	STARPOINT PROVO 16-			889.00		M
+ 102/03-02-040-03W4/00	Husky Oil Operations Limi	HUSKY 3B2 PROVOST 3			891.00		Oc
+ 100/05-02-040-03W4/00	Husky Oil Operations Limi	HUSKY 3A PROVOST 3			814.00		Oc

Wells with Digital Logs: 165 Wells with Raster Logs: 0 Wells with Well Files: 165 Total Curves: 11806

See *Related Topics* below for an explanation about whether or not the list of available items for each well is downloaded along with the initial catalog or only when you expand the well node.

You can save a list of wells, but the actual items available for each well are not saved. In this way, the information is always polled so that you get the latest list of curves.

Instead of limiting the volume of data you initially display in the Search Results grid, it's best to display all the data available so that you get a good idea of what's in an area, and then reduce what is displayed in the Search Results grid using filters. Items hidden by filters are not downloaded from the IHS Information Hub or your companies proprietary server.

Related Topics



See *"About Searching,"* p. 8

See *"Saving and Loading Projects,"* p. 24

Changing the Search Results Grid

Change the columns, colors, font, and other display properties of the Search Results grid.

Sort by ascending and descending order at both the well level and at the item level within individual wells. In the example below, the start depth of the curves within a well are sorted.

Well Location	Operator	Spud Date	TWP	Curve
102/09-01-040-03W4/00	Penn West Petroleum Ltd.	May 07, 199	40	SP
				SFLU
				NPHI
				ILM
				ILD
				GR
				DRHO
				DPHI
				CALI

Drag column headers in the Search Results grid to change the left-to-right order in which they appear. LOGarc enables you to save the Search Results grid for future sessions.

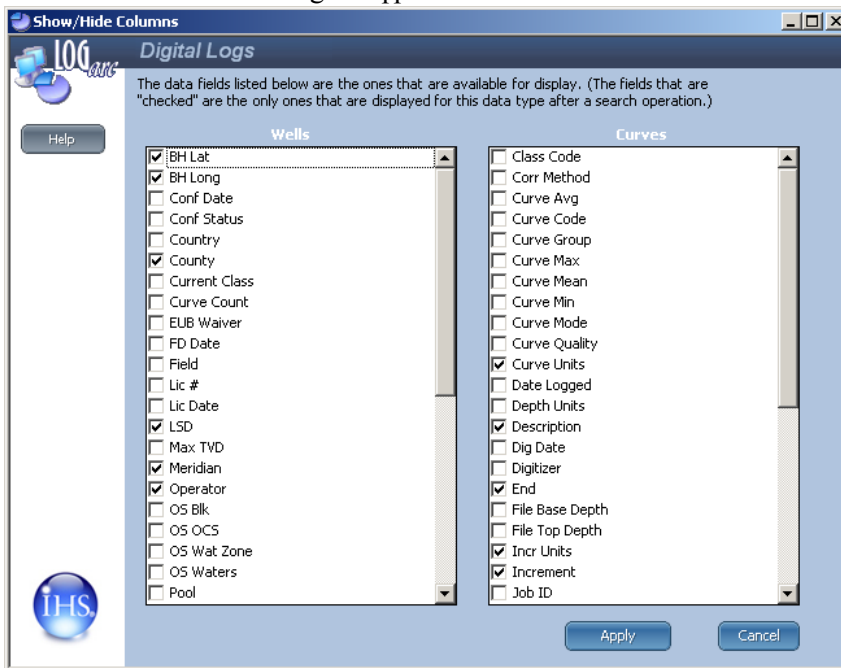
Well Location	Operator	Spud Date	TWP	Well #	Well Name	Curve
102/09-01-040-03W4/00	Penn West Petroleum Ltd.	May 07, 199	40		STARPOINT PROVO 91	SP
						SFLU
						NPHI
						ILM
						ILD
						GR
						DRHO



To change the columns displayed

1. Right-click the Search Results grid and from the shortcut menu, click **Show/Hide columns**.

The *Show/Hide Columns* dialog box appears.



2. Using the **Wells** and the **Curves** display panes, select the various columns to display and hide.



To sort rows in columns by ascending or descending value

- ▶ Click the header of the column within which to sort rows by ascending or descending value. Each time you click a column it switches between ascending and descending order.

A triangle appears in the header of the sorted column. A triangle with the base down and the point up indicates the rows are sorted from small to large / low to high. A triangle with the point down and the base up indicates the rows are sorted from large to small / high to low.

Well Location	Operator	Spud Date	TWP	Curve	
102/09-01-040-03W4/00	Penn West Petroleum Ltd.	May 07, 199	40	Curve	
				Start	
				End	
<input type="checkbox"/>	SP	802.125	924.875	2	Description
<input type="checkbox"/>	SFLU	802.125	924.875	5	
<input type="checkbox"/>	NPHI	802.125	924.875	9	
<input type="checkbox"/>	ILM	802.125	924.875	3	
<input type="checkbox"/>	ILD	802.125	924.875	4	
<input checked="" type="checkbox"/>	GR	802.125	924.875	7	
<input type="checkbox"/>	DRHO	802.125	924.875	8	
<input type="checkbox"/>	DPHI	802.125	924.875	10	
<input type="checkbox"/>	CALI	802.125	924.875	6	

The parent/child relationship between the Well Location and its curves is maintained.

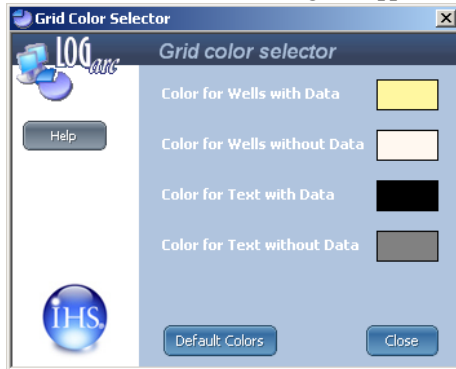
- ▶ To remove sorting, from the **Tools** (🔑) menu, click **Clear All Sorting**.



To change the catalog colors

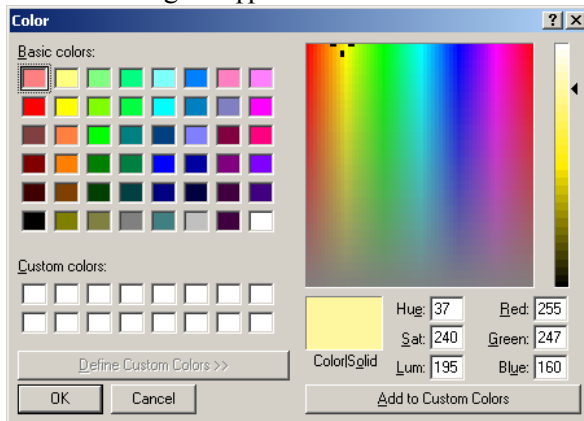
1. From the **Tools** (🔑) menu, select **Change Grid Color**.

The *Grid Color Selector* dialog box appears.

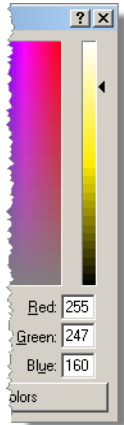


2. Click the color chip to change.

The *Color* dialog box appears.



3. Select the desired color by either clicking a basic color in the left pane, or by clicking a color family in the right color palette pane and adjusting the hue by dragging the slider to the right of the color palette pane. You can also type specific RGB colors and other values directly in the boxes below the color palette.



4. Click **OK**.
 - ▶ To revert to the original colors with which LOGArc shipped, click **Original Colors**.
5. Using the *Grid Color Selector* dialog box, click **Close**.



To change the catalog font size

- ▶ From the **Tools** (🔑) menu, select one of the **Grid Font** options.



To change UWI delimiters

- ▶ From the **Tools** (🔑) menu, select **Show UWI delimiters** to include slashes and dashes with UWIs in the Well Location column of the Search Results grid.

Related Topics



See "Selecting and Retrieving Logs," p. 21

See "Filtering Digital Logs in the Search Results Grid," p. 17

Filtering Digital Logs in the Search Results Grid

Filter both the wells and curves that appear in the Search Results grid and the actual items retrieved. Filter options, or curve constraints appear to the left of the Search Results grid. The constraints you apply limit both the curves displayed in the Search Results grid (if you used Full Search mode), and the actual curves and other items that are retrieved (if you used Quick Search mode). Save the curve constraints you specify as a custom filter.

Select the wells, run types, data sources, and custom filters to apply to the Search Results grid. Wells and well items that don't meet the criteria you select are not removed from the grid, just temporarily hidden. Hidden items are not retrieved regardless of whether you are using a Full Search or a Quick Search.

The screenshot shows a search filter panel with the following sections:

- Selected data only:** Selected data only, Wells with data only, Geophysical curves only
- Run Types Only:** MP, TVD, RPT, HRES
- Source Types Only:** Raw, Processed, Digitized, Analyzed, Modified
- Custom Source:** [Text box containing "ABCDilco"]
- Curve Filter:** [Dropdown menu: Sonic and Density], Apply, [Edit button]

The Custom box in the Source Types Only pane enables you to type the name of a custom source.

The UWIs displayed in the Search Results grid can be exported to either a text file with a wel extension or to the Windows Clipboard from which they can be pasted into a third-party application. For details, see *Related Topics* below.



To filter digital logs using curve constraints

1. With the catalog displayed, filter the rows so that only those with data appear by clicking **Wells with data only** in the curve constraints pane to the left of the Search Results grid.
2. Additional options with which you may want to filter the catalog are as follows:

Data Type	Selected data only - only wells and curves with a checkmark in the selected column appear. This can be useful for transactional accounts to verify you do not incur unnecessary charges for ad hoc customers.
	Wells with data only - wells without data specific to the tab you are currently viewing (logs or well files) are hidden from the display.
	Geophysical curves only - wells with sonic, density, and gamma curves appear.
Run Type	MP (Main Pass - measured depth), RPT (Repeat Pass), TVD (True Vertical Depth), HRES (High Resolution).
Source Type	Raw - the unmodified file as originally provided by the logging company. Most of our logs are in this format.
	Processed - converted from tape. For Source Types, the IHS Information Hub typically carries only unprocessed logs. If you have a proprietary data source configured with digital logs, you might select the Processed option.
	Digitized - hand-digitized.
	Analyzed - analyzed by petrophysicists.
	Modified - corrected.
	Custom - Filter by custom sources, such as your own custom curves. Type the filter text in the box to enable the checkbox. The asterisk (*) wildcard is supported.

Curve Type Select **New Custom Filter** to include curve mnemonics in the Search Results grid that appear in a curve group you select. For example, the Sonic group includes DT, AC, DTCM, DTCO, DT35, and more. Companies who are licensing LOGarc can contact IHS Customer Care for information about adding other mnemonics to a LOGarc curve group.

If you have created filters in the past, they can be edited by selecting the filter name from the Curve Filter drop-down list and then clicking **Edit**. Once ready, click **Apply**.

Only wells that match the criteria specified above appear in the Search Results grid. Filtered items are not removed from the actual catalog, just hidden from the current view, and they are not retrieved from the IHS Information Hub.

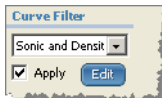


To create a custom curve filter

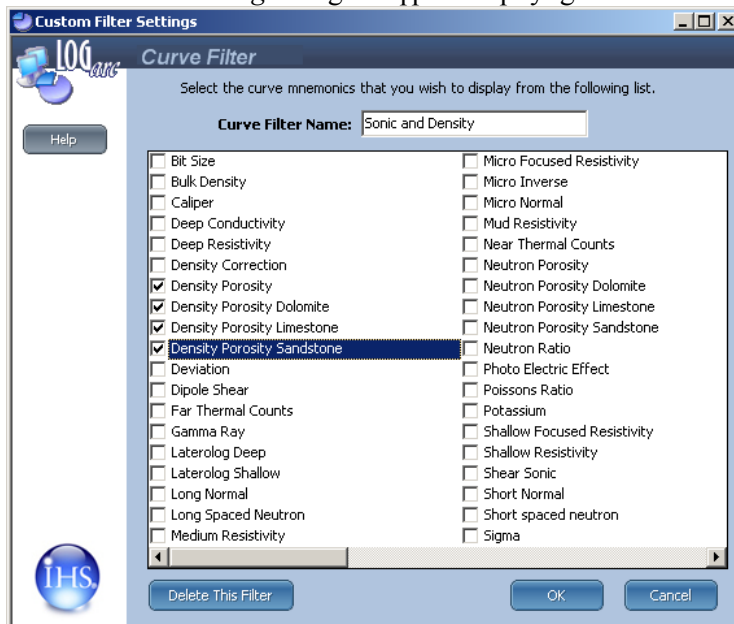
1. With the catalog displayed, filter the rows so that only those with data appear by clicking **Wells with data only** in the raster constraints pane to the left of the Search Results grid.
2. Using the Curve Filter drop-down list, select **New Custom Filter**

OR

With a custom filter that you want to modify selected in the drop-down list, click **Edit**.



The *Custom Filter Settings* dialog box appears displaying a number of curve groups that contain various mnemonics.



- ▶ For new custom filters, type a name in the Filter Name box.
2. Select the curve group that includes the mnemonics to display in the Search Results grid, and then click **OK**.
- ▶ Save this filter as a template to modify in the future or when you are done with it, click **Delete this Filter** in the bottom-left of the *Curve Filter* dialog box.

Related Topics



See "Selecting and Retrieving Logs," p. 21

See "Changing the Search Results Grid," p. 14

See "Exporting UWIs to Well Lists or to the Clipboard," p. 23

Filtering Raster Logs in the Search Results Grid

Display rasters in the Search Results grid that include one or more of the several depth calibration files.

Just like with the Digital Logs tab, when raster log constraints are applied and you click **Select** to select all of the raster logs, only those rasters that are currently displayed in the Search Results grid and that have not already been filtered out are selected.

The UWIs displayed in the Search Results grid can be exported to either a text file with a `wel` extension or to the Windows Clipboard from which they can be pasted into a third-party application. For details, see *Related Topics* below.



To filter raster logs using raster constraints

1. With the catalog displayed, filter the rows so that only those with data appear by clicking **Wells with data only** in the raster constraints pane to the left of the Search Results grid.
2. Additional options with which you may want to filter the catalog are as follows:

Calibration Types	Image Only - associates one default calibration for each image instead of allowing multiple calibrations for a single raster. Original - uses the original calibration used by the logging company instead of the in-house calibration performed by a vendor can be used instead of one of the above three options. This is helpful if working with the rasters in a third-party program that enables you to create your own depth calibration. SIF, DRA, LIC - one or a combination of DRA (Geographix), SIF (TGS), or LIC calibration files. When a preferred depth calibration is not specified, the default selection hierarchy is <i>SIF</i> followed by <i>DRA</i> , then followed by <i>LIC</i> .
Segment Types	Several custom segment type strings can be specified so that only rasters that include that information appear. The Segment Type box supports the asterisk (*) wildcard.

Only wells that match the criteria specified above appear in the Search Results grid. Filtered items are not removed from the actual catalog, just hidden from the current view.

Related Topics



See "Selecting and Retrieving Logs," p. 21

See "Changing the Search Results Grid," p. 14

See "Exporting UWIs to Well Lists or to the Clipboard," p. 23

Filtering Well Files in the Search Results Grid

Display zip files containing archived LAS files from which individual curves available from the IHS Information Hub have been derived. This is helpful for people who want to work with the original unprocessed LAS file. Apply well file constraints so that only wells with data, with files other than LAS files, or that have already been selected appear.

Just like with Digital Logs tab, when well file constraints are applied and you click **Select** to select all of the well files, only those that are currently displayed in the Search Results grid and that have not already been filtered out are selected.

The UWIs displayed in the Search Results grid can be exported to either a text file with a wel extension or to the Windows Clipboard from which they can be pasted into a third-party application. For details, see *Related Topics* below.



To filter well files using well file constraints

1. With the catalog displayed, filter the rows so that only those with data appear by clicking **Wells with data only** in the well file constraints pane to the left of the Search Results grid.
2. Additional options with which you may want to filter the catalog are as follows:
 - **Selected data only** - display only items for which the checkbox is already selected in the Search Results pane.
 - **Hide LAS Files** - display items that are not LAS files in the Search Results pane. For example, directional surveys, core analysis reports, geological surveys, velocity surveys and more.
 - **File Type/Name** - specify one or more custom file name or file type strings so that only rows that include that file name or type string appear. The File Type/Name box supports the asterisk (*) wildcard.

Only items that match the criteria specified above appear in the Search Results grid. Filtered items are not removed from the actual catalog, just hidden from the current view.

Related Topics




See "Selecting and Retrieving Logs," p. 21

See "Changing the Search Results Grid," p. 14

See "Exporting UWIs to Well Lists or to the Clipboard," p. 23

Selecting and Retrieving Logs

Wells with items are highlighted yellow when they have items relevant to the current tab. For example, a well with curves will be highlighted when displayed on the Digital Logs tab, a well with rasters will be highlighted when displayed on the Raster Logs tab, and so on. Click  in the left-most column of the row to expand the well and reveal the items available for download. Click the checkbox to the left of a specific item to download that item.

With Quick Search, the list of items available for download under each well is only populated when you expand the well. In this way, the initial catalog is downloaded more quickly.


After selecting the desired items in the Search Results grid, specify which data types to retrieve (digital logs, rasters, well files), how to process LAS data, and the location where to save the downloaded files.

Save the processing options you define below to a retrieve profile so that you don't have to reconfigure settings every time. Where multiple retrieve profiles are defined, quickly switch between different processing options. Load retrieve profiles by selecting **Tools** (🔧) > **Load Retrieve Profile**.



To select and retrieve logs

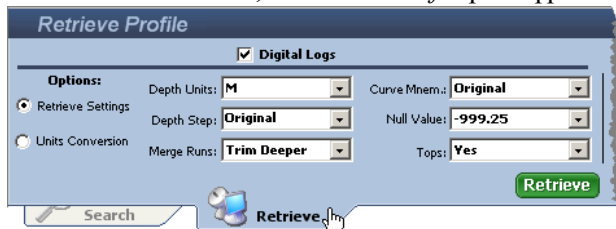
1. Do one of the following:

- To select individual items one-by-one, click  to the left of the Well Location row to display the individual items available for that well, and then click the checkbox to the left of the desired items to download.
- To select all of the items beneath a well, click the checkbox to the left of the well name.
- To select all items for all wells displayed in the Search Results grid, click **Select** to the left of the Search Results grid.



TIP: To clear the Search Results grid of all but the logs items currently selected, to the left of the Search Results grid, select **Selected data only**.

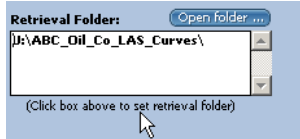
When items are selected, the *Retrieve Profile* pane appears.




2. As various file types are selected for retrieval, corresponding check boxes on the Retrieval Profile pane are activated. Select checkboxes to customize the retrieval and set processing options.

► For Digital Logs, select the **Retrieve Settings** and the **Units Conversion** radio buttons and specify the processing options.

- Click the Retrieval Folder pane to the right of the Retrieve Profile tab to launch a *Browse for Folder* window and navigate to the desired folder where to save your downloaded LAS files.



 **NOTE:** If you click **Open folder**, it actually opens the folder specified in the Retrieval Folders pane instead of giving you the option to browse for a different folder.

- Click **Retrieve**.

Once the retrieval completes, the *Retrieval Log* dialog box appears.



► Click **View Successful File** to display details about the items retrieved.

- Click **OK** to return to the main LOGarc window.

The items are saved in the Retrieval Folder specified above and the file name matches the UWI (for example, *100070106220W500.las*). Where there are multiple las files for the same UWI, a number in parentheses is appended to the end of the file name but before the file extension as follows: *100070106220W500(1).las*.

If both main pass and true vertical depth passes are downloaded, *_TVD* is appended to the end of the file name but before the file extension as follows: *100070106220W500_TVD.las*.

Related Topics



See "Changing the Search Results Grid," p. 14

See "Saving and Loading Retrieve Profiles," p. 25

See "Filtering Digital Logs in the Search Results Grid," p. 17

Exporting UWIs to Well Lists or to the Clipboard

Export UWIs displayed in the Search Results grid to a well list with a *.wel* extension, or to the Windows Clipboard, which you can then paste into another application. You can import the well list into another application.

UWIs are saved in standard 16-digit format without delimiters.



To export UWIs to well lists or to the Clipboard

- ▶ From the **File** (📁) menu, select either **Export Displayed UWIs to File** or **Export Displayed UWIs to Clipboard**.

Related Topics



See "Searching by Area and Well Lists," p. 10

See "Saving and Loading Retrieve Profiles," p. 25

Saving and Loading Projects

Save configuration options including filtering applied to the Search Results grid. These can serve as templates you share with other LOGarc users or to update data for a project. Note that you can save retrieve profiles that define the curve processing options without having to save the entire project. See *Related Topics* below.

Following are the settings saved in a project file: search location, search domain (Canadian, US, International), LAS search mode (Quick Search or Full Search), custom curve filters, advanced search settings, curve constraints (run type, source, etc.), Search Result grid settings, and data processing options.

To save just curve processing options use a retrieve profile instead, see *Related Topics* below.



To save projects

1. From the **File** (📁) menu, select **Save Project**.
The *Save As* window appears.
2. Type the desired name and then click **Save**.
The project file is saved with a *.prj* extension.



To load projects

1. From the **File** (📁) menu, select **Open Project**.
The *Open* window appears.
2. Navigate to the project file with a *.prj* extension, and then click **Open**.
The project is opened in LOGarc.

Related Topics



See "Saving and Loading Retrieve Profiles," p. 25

Saving and Loading Retrieve Profiles

Save the retrieval and curve processing options defined using the Retrieve tab. Save multiple retrieve profiles with different processing options to use as templates for different processing.

To save the area of interest and the curve catalog filtering options, see *Related Topics* below.



To save retrieve profiles

1. From the **Tools** (🔑) menu, select **Save Retrieve Profile**.

The Save As window appears.

2. Type the desired name and then click **Save**.

The retrieve profile is saved with a *.ret* extension.



To load retrieve profiles

1. From the **Tools** (🔑) menu, select **Load Retrieve Profile**.

The Open window appears.

2. Navigate to the desired retrieve profile with a *.ret* extension, and then click **Open**.

The retrieve profile is opened in LOGarc.

Related Topics



See "Selecting and Retrieving Logs," p. 21

See "Saving and Loading Projects," p. 24

See "About Searching," p. 8

Viewing Well Data using Visual Explorer

Visual Explorer integrates with LOGarc. It enables you to work with well, curve, and log data.

Visual Explorer is licensed separately from LOGarc. Contact IHS Customer Care for purchasing details.

Related Topics



See "Contacting Customer Care," p. 4

Dialog Boxes

Accounts

With this feature...	Do this...
Add	Create a new data source and data source logon account.
Edit	Change an existing data source and data source logon account.
Move Up Move Down	Change the order in which data sources are polled.
Proxy Info	Configure a proxy server connection that connects to a data source.
Enable Hierarchal Search	Enable hierarchal searching across multiple data sources.

Parent Topics

See "Adding or Editing User Account Settings," p. 6

Add User Account

With this feature...	Do this...
Test Account	Click to ping the data source using the information you typed below.
LOGarc Archive Name	Type a name by which to identify the data source.
URL	Type the http:// protocol followed by the URL of the data source.
User Name	Type the logon name of the user account.
Password Confirm Password	Type the logon password of the user account.

Parent Topics

See "Adding or Editing User Account Settings," p. 6

Custom Filter Settings

With this feature...	Do this...
Curve Filter Name	Type the name by which to identify the filter you create.
Display pane	Select the curve group that contains the mnemonics to include in the filter. Only curves with mnemonics that appear in the curve group appear in the filtered Search Results grid.

Parent Topics

See "Filtering Digital Logs in the Search Results Grid," p. 17

Edit User Account

With this feature...	Do this...
Test Account	Click to ping the data source using the information you typed below.
LOGarc Archive Name	Type a name by which to identify the data source.
URL	Type the http:// protocol followed by the URL of the data source.
User Name	Type the logon name of the user account.
Password Confirm Password	Type the logon password of the user account.

Parent Topics

See "Adding or Editing User Account Settings," p. 6

Grid Color Selector

With this feature...	Do this...
Color for wells with/without Data	Click the color chip to display the Color selector dialog box by which to color rows containing wells either with or without data in the Search Results grid.
Color for text with/without Data	Click the color chip to display the Color selector dialog box by which to color text listing wells either with or without data in the Search Results grid.
Original Colors	Revert to the original colors with which LOGarc shipped.

Parent Topics

See "Changing the Search Results Grid," p. 14

Proxy Info

With this feature...	Do this...
Proxy Address	Type the URL of the proxy server.
Proxy Port	Type the port through which clients communicate with the proxy server.
Domain	Type the network domain.
User Name	Type the logon account name.
Password	Type the logon account password.

Parent Topics

See "Adding or Editing User Account Settings," p. 6

Retrieve Pane

With this feature...	Do this...
Digital Logs	Select to download digital logs and select criteria below.
Retrieve Settings	<p>Depth Units - Select the units in which to harmonize downloaded LAS files. Original units are those of the actual source file and may vary from file to file.</p> <p>Depth Step - Select a default sampling increment or type your own. Original is the sampling increment in the actual source file and may vary from file to file. If you further select to merge runs, the smallest depth increment in the merged file is used. Smaller steps result in more data samples and thus a larger file size. Larger steps may result in loss of detail.</p> <p>Merge Runs - Combine curves run over different depths (intervals) in the same well as one file. To do this, select whether portions of overlapping intervals should be removed from one of the overlapping curves and if so, whether to remove the portion from the shallower curve, the deeper curve, or a portion of each.</p> <p>Curve Mnem - Select whether to keep the original curve mnemonic or to normalize then all to a common mnemonic, which enables curve merging.</p> <p>Null Value - Select a null value to substitute for curve portions for which a value is not specified.</p> <p>Tops - Select whether to retrieve top names and optional top depths along with the curves in which they appear. The tops table in your database must already be populated the same as tops in the LOGtech public database.</p>
Units Conversion	Select whether to convert units in various types of curves. Original are the units in the actual source file and may vary from file to file.
Raster Logs	<p>Image and Registration Files - Select to download both a registration file and a raster image file. Registration files are used to correlate pixels in the raster image to a depth.</p> <p>Registration Files only - Select whether to download only a registration file without an image file.</p> <p>Single DRA - Select whether to download one depth registration file for the entire download or one for each individual raster.</p> <p>LIC and DRA registration files from LOGarc contain a path to the location of the raster log image.</p>
Well Files	<p>Retrieve into separate folders - Select to create a unique folder for each UWI.</p> <p>Retrieve into One folder - Select to place files for all of the wells into the same folder.</p>
Retrieval Folder	Click the display pane to create a folder in a shared or local location.

Parent Topics

See "Selecting and Retrieving Logs," p. 21

Search pane

With this feature...	Do this...
Coordinate Systems	Select the coordinate system, Lat Long coordinates, UWI pane, or Field entry box.
Advanced: Wells tab	Final TD - Final total depth. RR Date - Rig release date. Other Parameters - Operator, licence or permit number, current classification (abandoned, spudded, etc.), Formation at total depth. Spud Date - The date on which the drilling for the well began. Load Date - The date on which log data was loaded into the database. Sonic Flag - Whether the well has a sonic curve.
Advanced: Logs tab	Digital Curves - Select the desired digital curves or type your own non-standard mnemonic. For example, for proprietary data you may have a unique mnemonic. The Logs tab includes the <i>AND OR</i> boolean operators for either limiting or expanding the criteria of our search. Raster Logs - Select the desired raster log or type your own non-standard mnemonic.

Parent Topics

<i>See "Searching by Area and Well Lists," p. 10</i>	<i>See "Searching by Fields," p. 12</i>
<i>See "Exporting UWIs to Well Lists or to the Clipboard," p. 23</i>	

Show Hide Columns

With this feature...	Do this...
Wells Curves	Select the data fields to display. Clear the data fields to hide.

Parent Topics

See "Changing the Search Results Grid," p. 14

Visual Curves tabs

Visual Explorer integrates with LOGarc. It enables you to work with well, curve, and log data.

Visual Explorer is licensed separately from LOGarc. Contact Customer Care for purchasing details.

Parent Topics

See "Contacting Customer Care," p. 4